

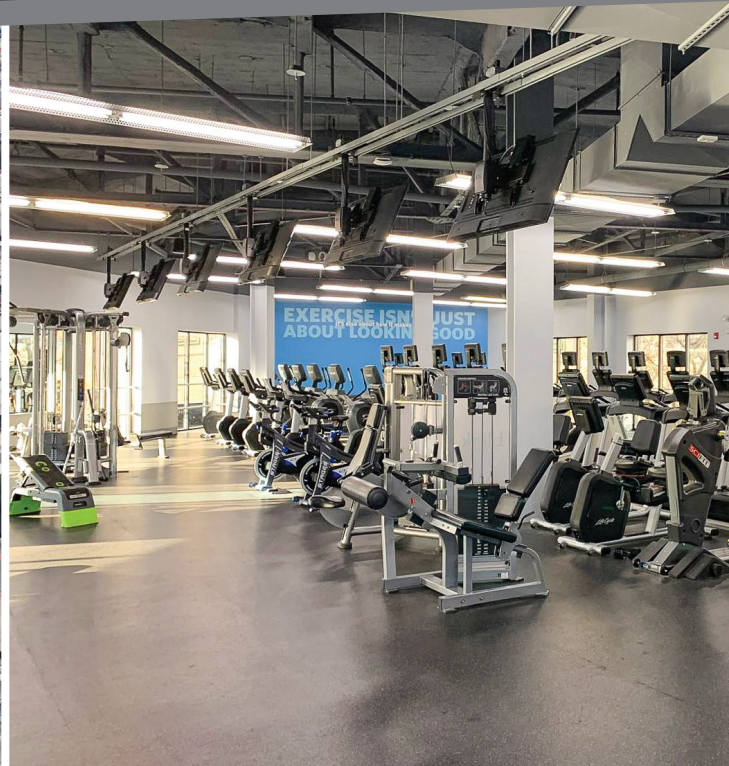
2-14 Ferry Street

Newark, New Jersey, 07105

AVAILABLE

FULLY EQUIPPED GYM

FOR RENT



Paramount Assets 

45 Academy Street, 5th Floor
Newark, New Jersey
www.paramountassets.com

CONTACT

Maurice Levy | 201.858.8182
mlevy@paramountassets.com

Samir Guzman | 201.858.8182
sguzman@paramountassets.com

Property Highlights

- Approximately 15,700 sq. ft.
- Downtown Newark location
- Fully Equipped Gym
- Across the Street From Newark Penn Station
- High Car and Foot Traffic
- 5-Minute Walk to One Gateway Center
- 8-Minute Walk to the Prudential Center
- Corner Property with High Visibility

Neighboring Tenants



Newark Penn
Train Station



Horizon Blue Cross Blue Shield of New Jersey



Demographics



POPULATION

1 Mile	3 Mile
53,402	351,833



HOUSEHOLDS

1 Mile	3 Mile
19,871	121,817

2-14 Ferry Street

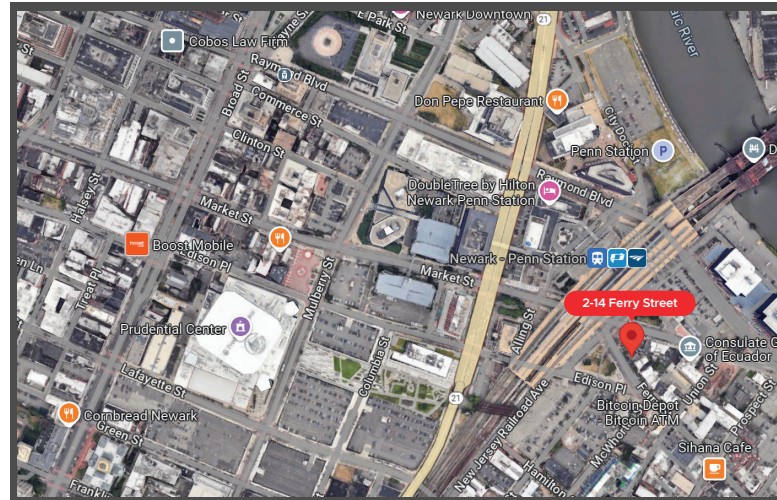
Newark, New Jersey, 07105

AVAILABLE

FULLY EQUIPPED GYM

FOR RENT

LOCATION



Paramount
Assets 

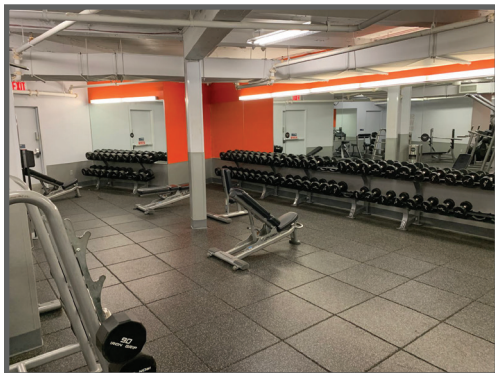
45 Academy Street, 5th Floor
Newark, New Jersey
www.paramountassets.com

CONTACT

Maurice Levy | 201.858.8182
mlevy@paramountassets.com

Samir Guzman | 201.858.8182
sguzman@paramountassets.com

INTERIOR PHOTOS



2-14 Ferry Street

Newark, New Jersey, 07105

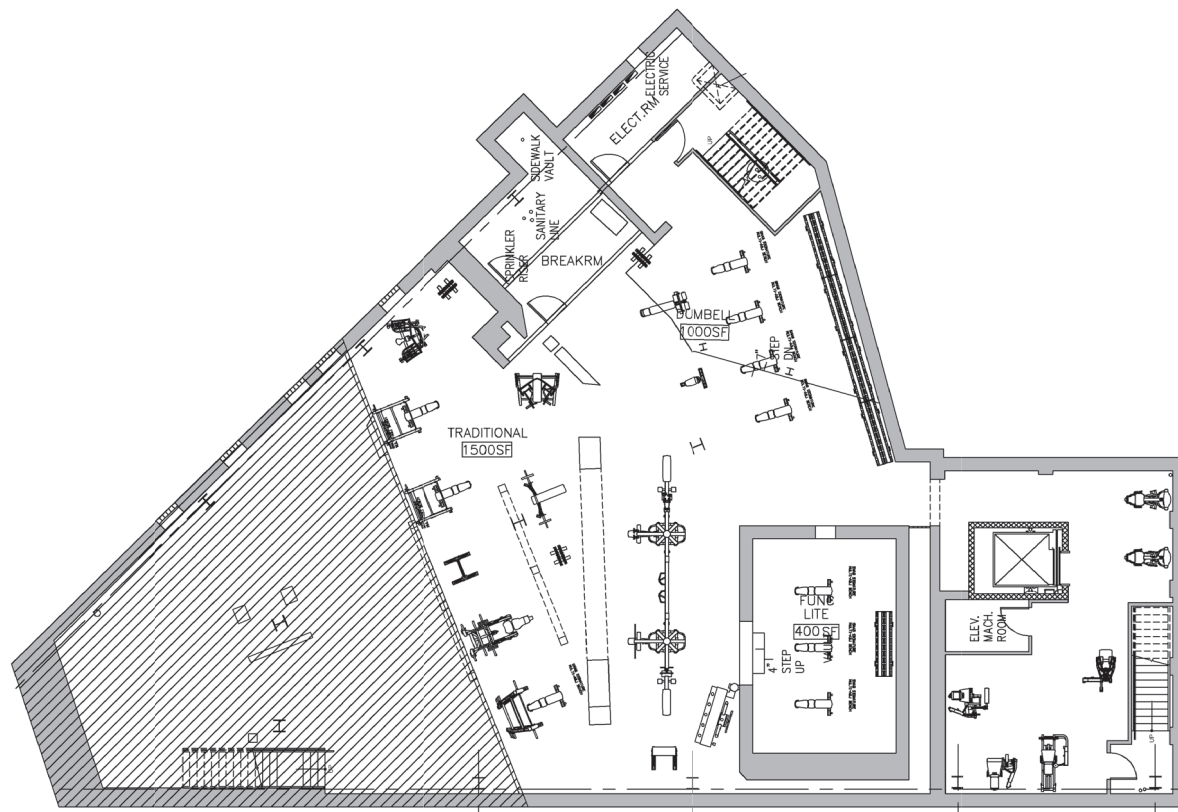
AVAILABLE

FULLY EQUIPPED GYM

FOR RENT

FLOOR PLAN

Basement



Paramount
Assets 

45 Academy Street, 5th Floor
Newark, New Jersey
www.paramountassets.com

CONTACT

Maurice Levy | 201.858.8182
mlevy@paramountassets.com

Samir Guzman | 201.858.8182
sguzman@paramountassets.com

2-14 Ferry Street

Newark, New Jersey, 07105

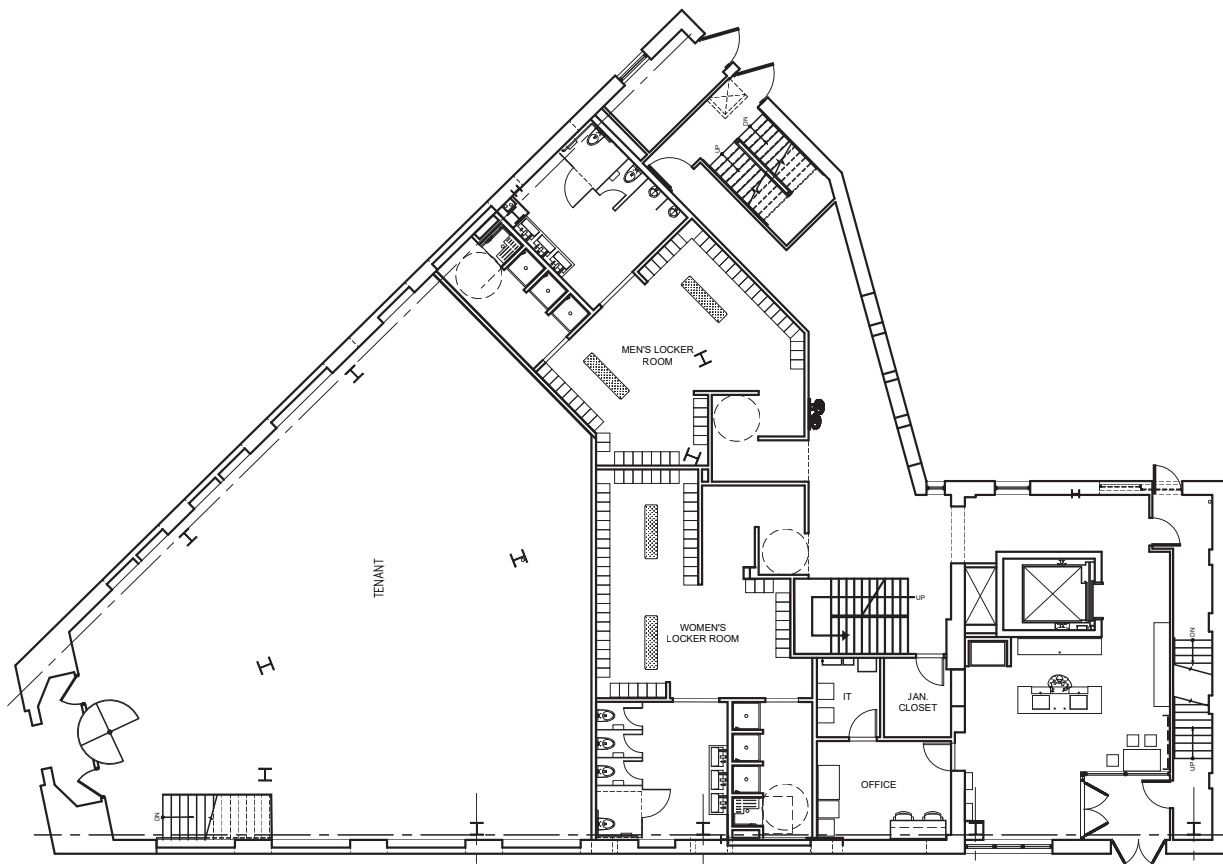
AVAILABLE

FULLY EQUIPPED GYM

FOR RENT

FLOOR PLAN

Ground Level



Paramount
Assets 

45 Academy Street, 5th Floor
Newark, New Jersey
www.paramountassets.com

CONTACT

Maurice Levy | 201.858.8182
mlevy@paramountassets.com

Samir Guzman | 201.858.8182
sguzman@paramountassets.com

2-14 Ferry Street

Newark, New Jersey, 07105

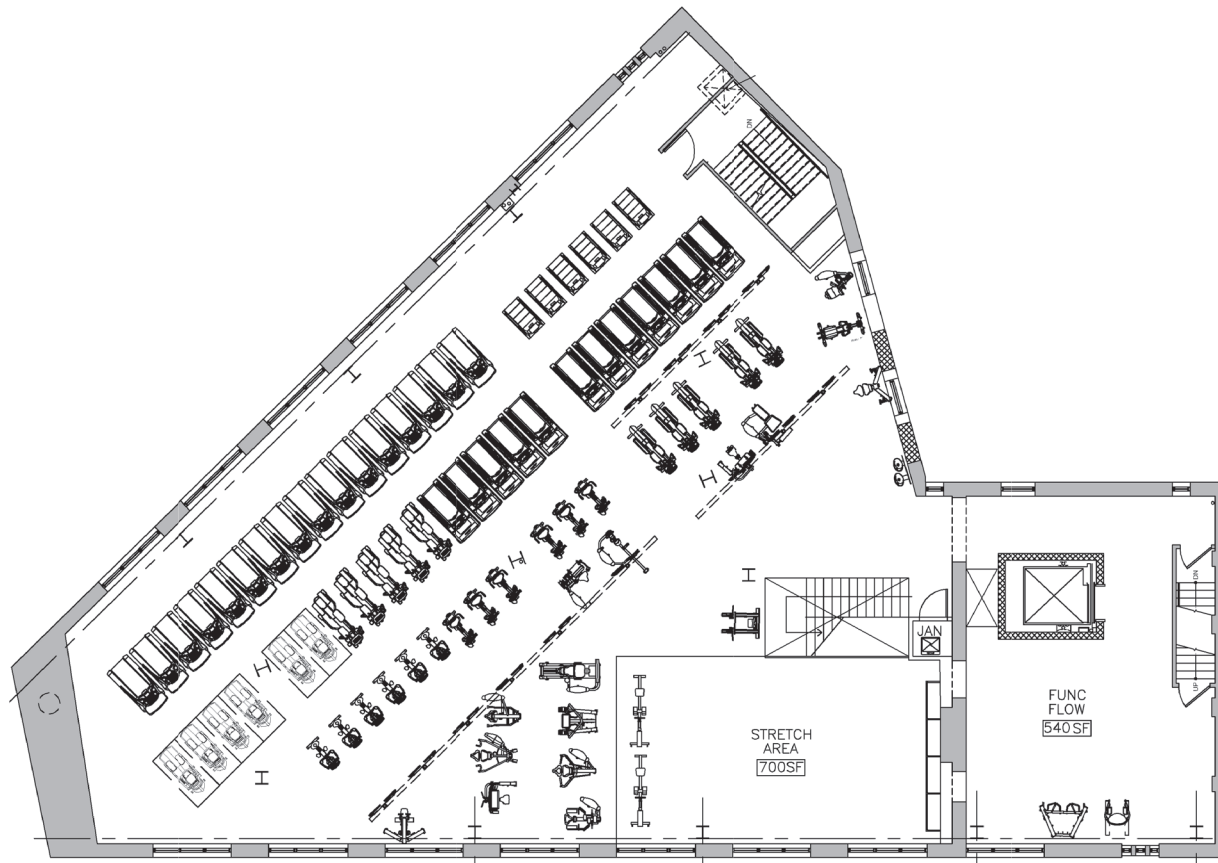
AVAILABLE

FULLY EQUIPPED GYM

FOR RENT

FLOOR PLAN

Second Level



Paramount
Assets 

45 Academy Street, 5th Floor
Newark, New Jersey
www.paramountassets.com

CONTACT

[Maurice Levy](mailto:mlevy@paramountassets.com) | 201.858.8182
mlevy@paramountassets.com

[Samir Guzman](mailto:sguzman@paramountassets.com) | 201.858.8182
sguzman@paramountassets.com