

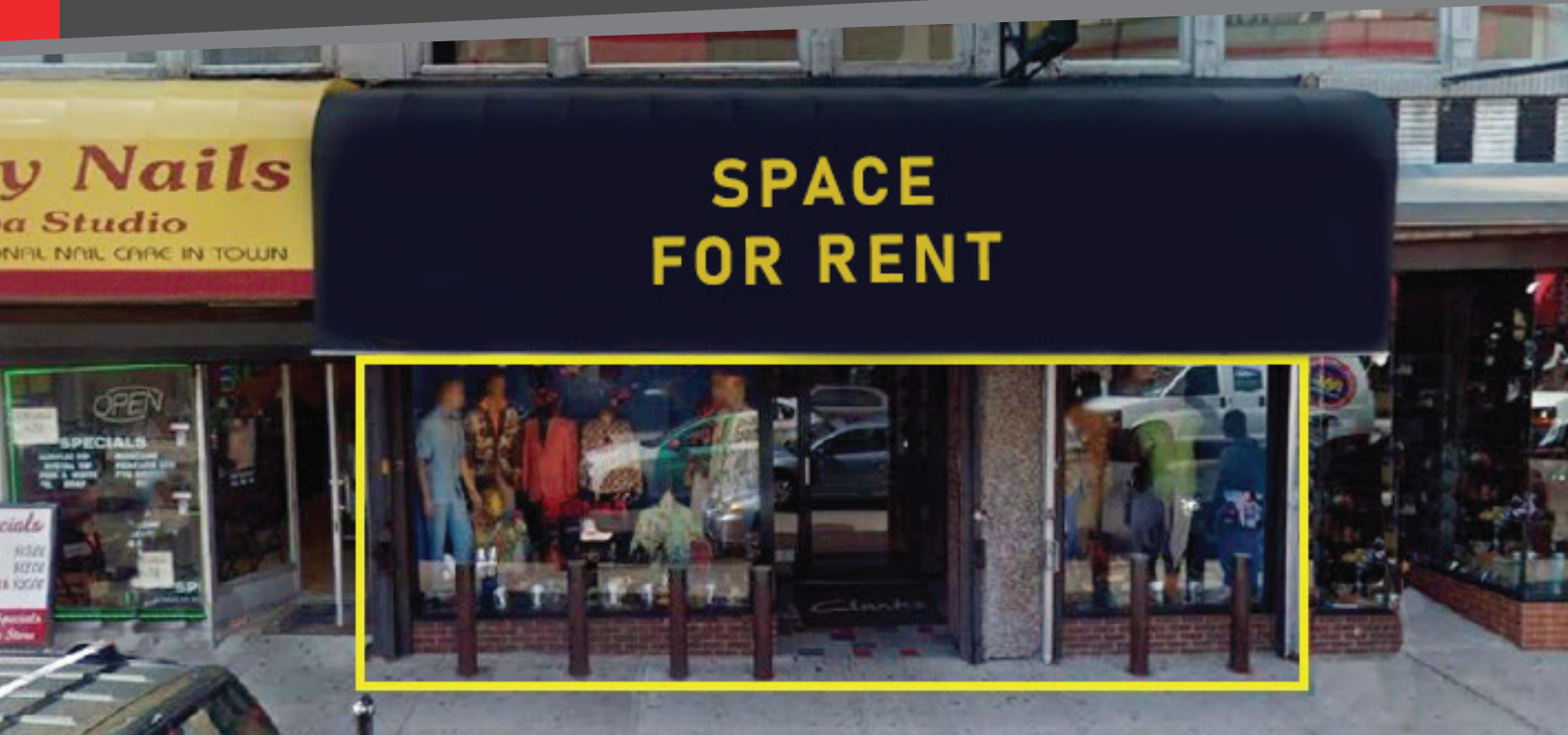
10 Branford Place

Newark, New Jersey, 07102

AVAILABLE

RETAIL SPACE

FOR RENT



Paramount Assets 

45 Academy Street, 5th Floor
Newark, New Jersey
www.paramountassets.com

CONTACT

Maurice Levy | 201.858.8182
mlevy@paramountassets.com

Samir Guzman | 201.858.8182
sguzman@paramountassets.com

Property Highlights

- Approximately 1,012 sq. ft.
- Downtown Newark Location
- Ample Street Parking
- Heavy pedestrian traffic
- Next to the Prudential Center and Newark Penn Station

Neighboring Tenants

GameStop



CHIPOTLE

THE CHILDREN'S
PLACE

FAMILY DOLLAR

Demographics



POPULATION

| 1 Mile | 3 Mile |
|--------|---------|
| 53,402 | 351,833 |



HOUSEHOLDS

| 1 Mile | 3 Mile |
|--------|---------|
| 19,871 | 121,817 |